



GC Laboratory: AIRF Analysis Report
Jawaharlal Nehru University
New Delhi- 110067
India

Sample Information

Analysis Date & Time: 11/1/2017 10:25:14 PM

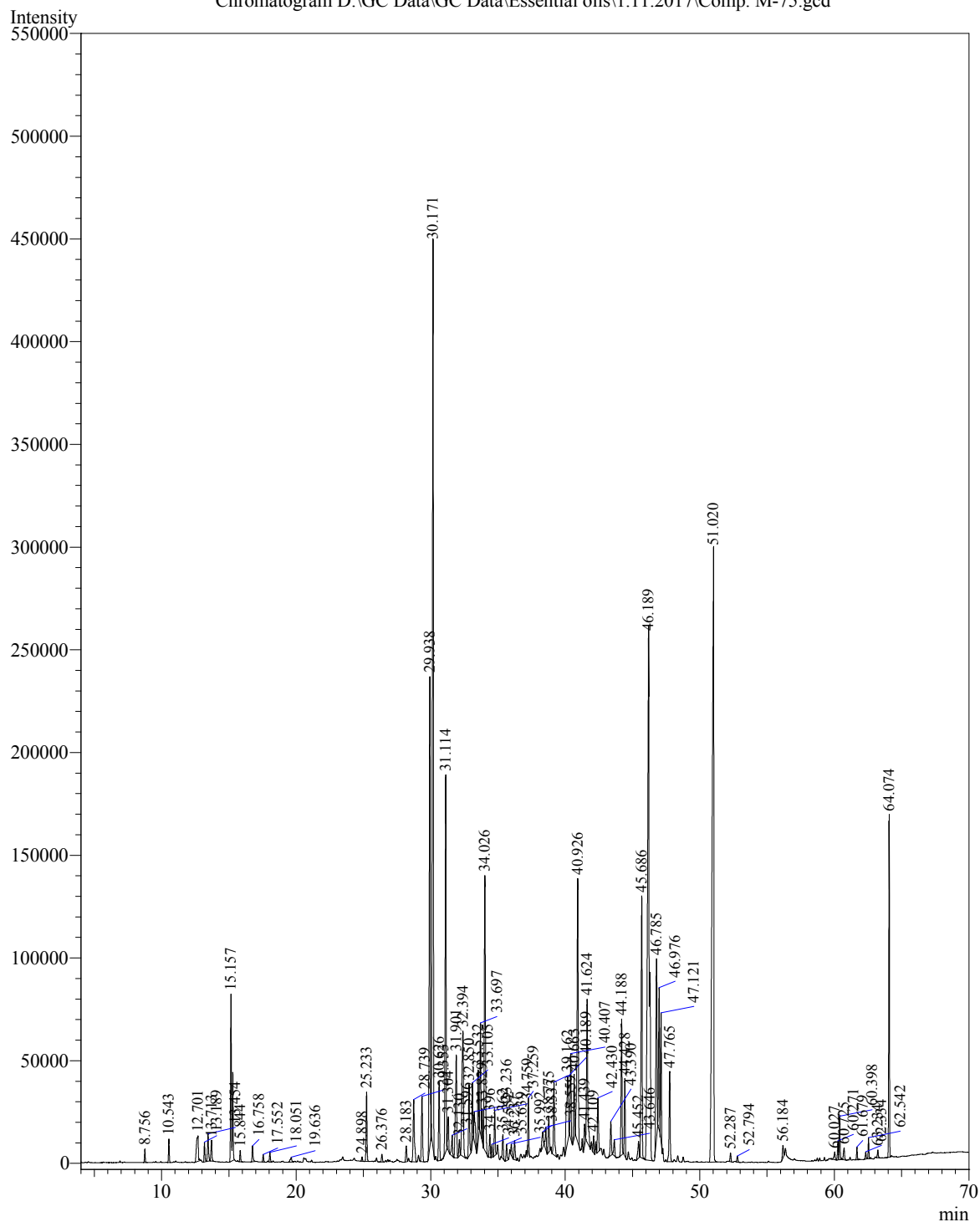
User Name : \$Admn.\$

Sample Name : Comp. M-75

Sample Type : \$Organic\$

Data Name : D:\GC Data\GC Data\Essential oils\1.11.2017\Comp. M-75.gcd

Chromatogram D:\GC Data\GC Data\Essential oils\1.11.2017\Comp. M-75.gcd



Peak Table - Channel 1

Peak#	Ret.Time	Area	Area%	Name
1	8.756	24310	0.1172	Alpha-pinene
2	10.543	44816	0.2161	Pinene beta
3	12.701	122331	0.5898	Di-1,2-propylene glycol
4	13.189	41171	0.1985	Benzyl alcohol
5	13.454	69934	0.3372	Di-1,2-propylene glycol
6	13.713	51997	0.2507	Di-1,2-propylene glycol
7	15.157	503226	2.4263	Methyl phenethyl oxide
8	15.844	23259	0.1121	Methyl benzoate
9	16.758	38742	0.1868	Phenethyl alcohol
10	17.552	16052	0.0774	Limona ketone
11	18.051	21623	0.1043	Pinocarveol trans
12	19.636	17464	0.0842	Myretenol
13	24.898	10501	0.0506	Verdox
14	25.233	156216	0.7532	Benzyl isobutyrate
15	26.376	19083	0.0920	Cyprotene
16	28.183	42160	0.2033	Copaen-4-alfa-ol beta
17	28.739	199657	0.9626	Copaene alpha
18	29.353	180973	0.8725	Phenylacetate isobutyl
19	29.938	1178784	5.6834	Cyperene
20	30.171	2424089	11.6876	alpha-Gurjunene
21	30.626	197298	0.9513	Caryophyllene (E)
22	31.114	914867	4.4110	Calarene
23	31.304	87652	0.4226	Alpha-Guaiene
24	31.596	55425	0.2672	Vestitenone
25	31.901	332466	1.6030	Himachalene alpha
26	32.130	41687	0.2010	Alpha-humulene
27	32.394	477691	2.3031	Rotundene
28	32.850	188794	0.9103	Gurjunene gamma
29	33.105	132296	0.6379	5-Hydroxy-6-methoxy-8-[(4-amino-1-methylbutyl)ar
30	33.236	101325	0.4885	Alpha-curcumene
31	33.532	154787	0.7463	Phenylacetate isopentyl
32	33.697	252536	1.2176	Valencene
33	33.829	68814	0.3318	Elemene gamma
34	34.026	800219	3.8582	beta-Himachalene
35	34.396	56864	0.2742	beta-Curcumene
36	34.552	25364	0.1223	Eremophila-1(10),8,11-triene
37	34.759	108786	0.5245	Maaliene alpha
38	35.362	60649	0.2924	Isospathulenol
39	35.639	42469	0.2048	Bisabolene (E)-alpha
40	35.992	28629	0.1380	Elemol alpha
41	36.237	52487	0.2531	Geranyl butyrate
42	37.259	116921	0.5637	Caryophyllene oxide
43	38.333	54380	0.2622	Isobutylquinoline
44	38.559	58849	0.2837	Lippifoli-1(6)-en-5-one
45	38.775	97451	0.4699	Isolongifolen-5-one

Peak#	Ret.Time	Area	Area%	Name
46	39.162	199442	0.9616	Cinnamate isobutyl
47	40.189	324773	1.5659	Iso E Super gamma
48	40.407	202431	0.9760	Tumerone <ar->
49	40.663	147604	0.7117	Patchouli alcohol
50	40.926	801337	3.8636	Santalol (Z)-alpha
51	41.439	54438	0.2625	Bergamotol alpha-(Z)-trans
52	41.624	413652	1.9944	Cyclocolorenone epi
53	42.109	39093	0.1885	Santalol (Z)-beta-epi
54	42.430	145676	0.7024	Santalol (Z)-beta
55	43.390	93346	0.4501	Beta-Selinene
56	43.646	41846	0.2018	Xanthorrhizol
57	44.188	334922	1.6148	Benzyl benzoate
58	44.428	184479	0.8894	Atlantone trans-alpha
59	45.452	52079	0.2511	Nootkatone
60	45.686	713914	3.4421	Phenylacetate benzyl
61	46.189	2414171	11.6397	Caryophyllene 14-hydroxy-(Z)
62	46.785	524940	2.5310	Muskone
63	46.976	318664	1.5364	Musk xylene
64	47.121	259145	1.2494	Tetralide
65	47.765	236508	1.1403	Benzyl salicylate
66	51.020	2568978	12.3861	Musk ketone
67	52.287	21119	0.1018	Ethylene brassylate
68	52.794	14820	0.0715	Pentadecanoic acid, isopropyl ester
69	56.184	34204	0.1649	cis-Vaccenic acid
70	60.027	22263	0.1073	1-Phenanthrenecarboxylic acid, 1,2,3,4,4a,4b,5,6,8a,9
71	60.271	42844	0.2066	1-Phenanthrenecarboxylic acid, 1,2,3,4,4a,4b,5,6,8a,9
72	60.398	94712	0.4566	1-Phenanthrenecarboxylic acid, 1,2,3,4,4a,4b,5,6,8a,9
73	60.725	34592	0.1668	Methyl dehydroabietate
74	61.679	24566	0.1184	1-Phenanthrenecarboxylic acid, 1,2,3,4,4a,4b,5,6,8a,9
75	62.334	16307	0.0786	Cinnamyl cinnamate
76	62.542	38510	0.1857	Santalol acetate (Z)-alpha
77	63.234	17962	0.0866	(Z)-epi-beta-Santalol
78	64.074	612339	2.9523	Diisooctyl phthalate
Total		20740770	100.0000	